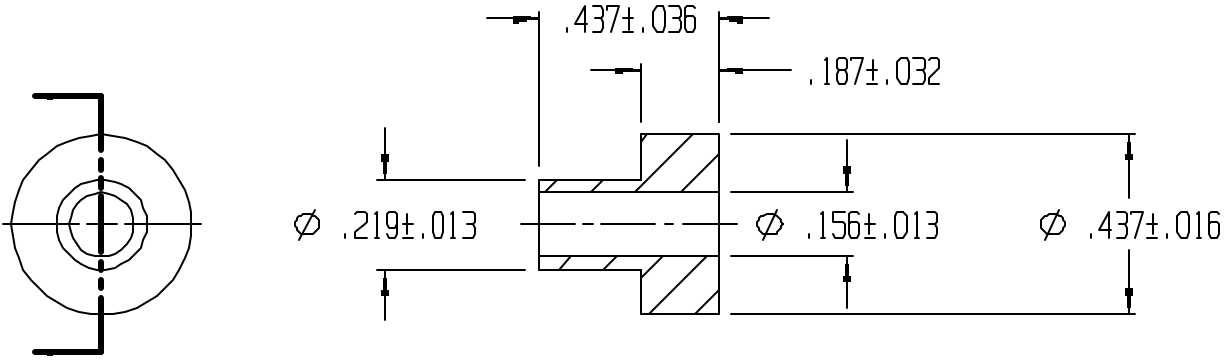


REVISIONS					
REV.	ZONE	BY	DESCRIPTION	DATE	APPROVED
3		MAD	REDRAWN TO CADKEY	10/8/97	



UNLESS OTHERWISE SPECIFIED DIMENSIONS ARE IN INCHES		LAVELLE		LAVELLE IND., INC.	
TOLERANCES ARE		665 McHENRY St.		BURLINGTON, WISC. 53105	
DECIMALS	MM	Ph. 414/763-2434		Fax 414/763-5607	
		TITLE		BUSHING	
		MATERIAL		F55004	
DRAWN		DATE		SHEET	
M A DEAN		12/17/92		1	
CHECK		DATE		OF	
				1	
DESIGN		DATE		REV.	
				3	
		FILE		PART NO.	
		g:\cadkey\parts\stock\bushings\1652.prt		1652	