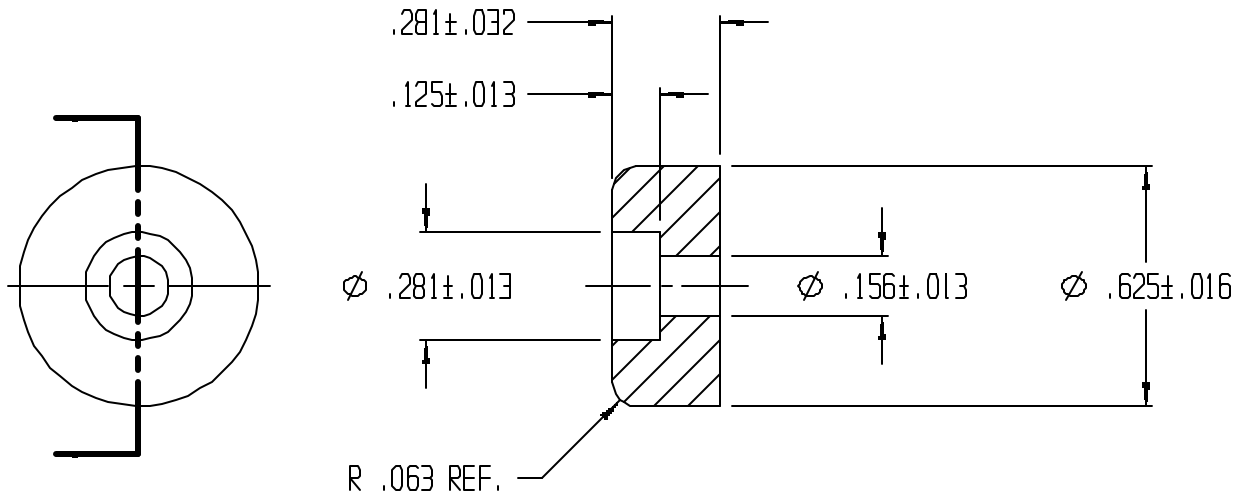


REVISIONS					
REV.	ZONE	BY	DESCRIPTION	DATE	APPROVED
3		MAD	REDRAWN TO CADKEY	4/1/98	



UNLESS OTHERWISE SPECIFIED  
DIMENSIONS ARE IN INCHES  
TOLERANCES ARE  
DECIMALS .013 .010 .005  
MM .005 .003 .002  
ANGULAR



LAVELLE IND., INC.  
665 McHENRY St. BURLINGTON, WISC. 53105  
Ph. 414/763-2434 Fax 414/763-5807

TITLE RECESS BUMPER

MATERIAL F57006 SHEET 1 OF 1

DRAWN M A DEAN DATE 10/12/92  
CHECK DATE  
DESIGN DATE

SIZE A SCALE 2X PART NO. 727R REV. 3

FILE PATH g:\cadkey\parts\stock\recssbpr\727R.prt