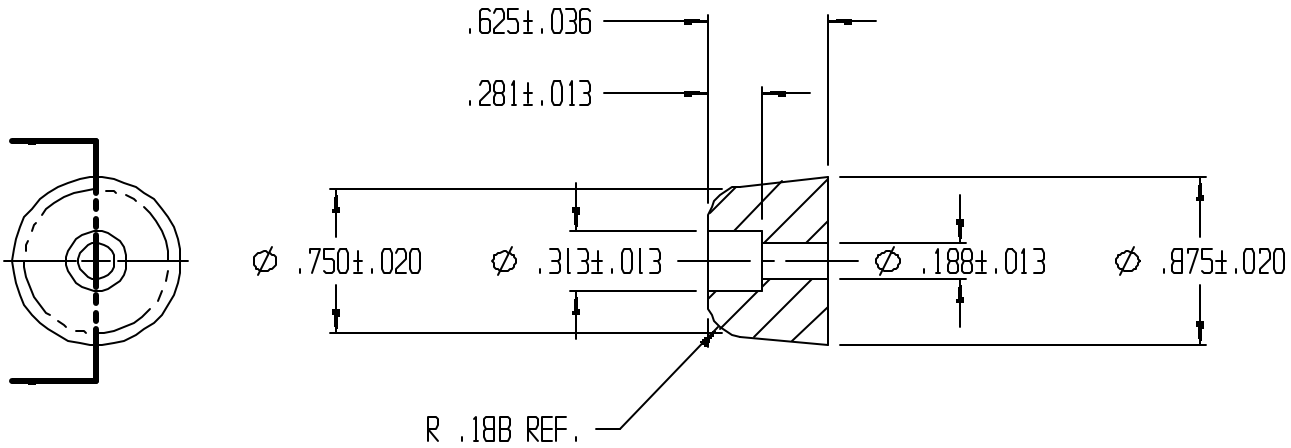


REVISIONS					
REV.	ZONE	BY	DESCRIPTION	DATE	APPROVED
4		MAD	ADDED TOLERANCES	3/30/98	



UNLESS OTHERWISE SPECIFIED
DIMENSIONS ARE IN INCHES
TOLERANCES ARE
DECIMALS .013 .005 ANGULAR



LAVELLE IND., INC.
665 McHENRY St. BURLINGTON, WISC. 53105
Ph. 414/763-2434 Fax 414/763-5807

TITLE RECESS BUMPER

MATERIAL F57006 SHEET 1 OF 1

DRAWN M A DEAN DATE 10/13/92

SIZE A SCALE 1X PART NO. 718R REV. 4

CHECK DATE

DESIGN DATE

FILE PATH g:\cadkey\parts\stock\recssbpr\718R.prt