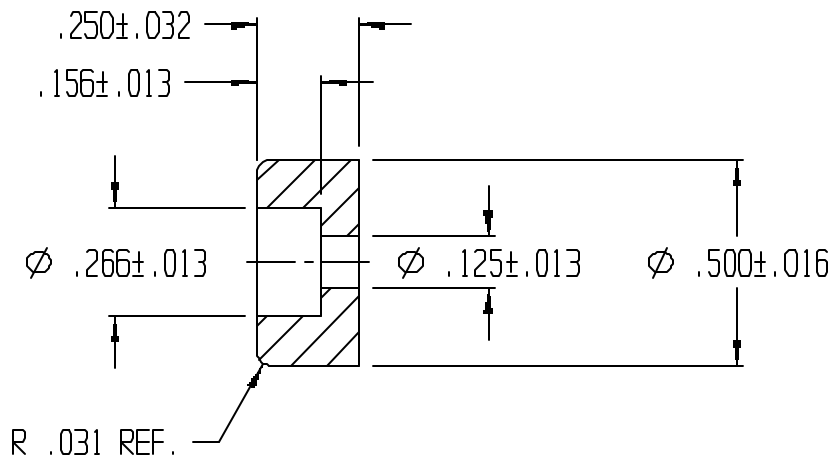
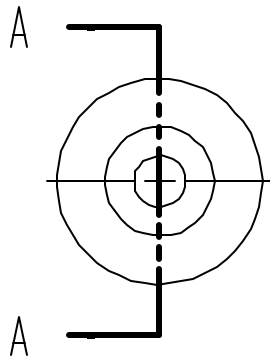


REVISIONS					
REV.	ZONE	BY	DESCRIPTION	DATE	APPROVED
3		MAD	REDRAWN TO CADKEY	1/8/99	
4		MAD	REF. WAS ±.013	1/18/99	



UNLESS OTHERWISE SPECIFIED
DIMENSIONS ARE IN INCHES
TOLERANCES ARE
DECIMALS MM ANGULAR



LAVELLE IND., INC.
665 McHENRY St. BURLINGTON, WISC. 53105
Ph. 414/763-2434 Fax 414/763-5607

TITLE
RECESS BUMPER

MATERIAL
F57006

SHEET OF
1 1

DRAWN DATE
M A DEAN 10/7/92

CHECK DATE

SIZE SCALE PART NO. REV.
A 2X 7051R 4

DESIGN DATE FILE
g:\codkey\parts\stock\recssbpr\7051r.prt