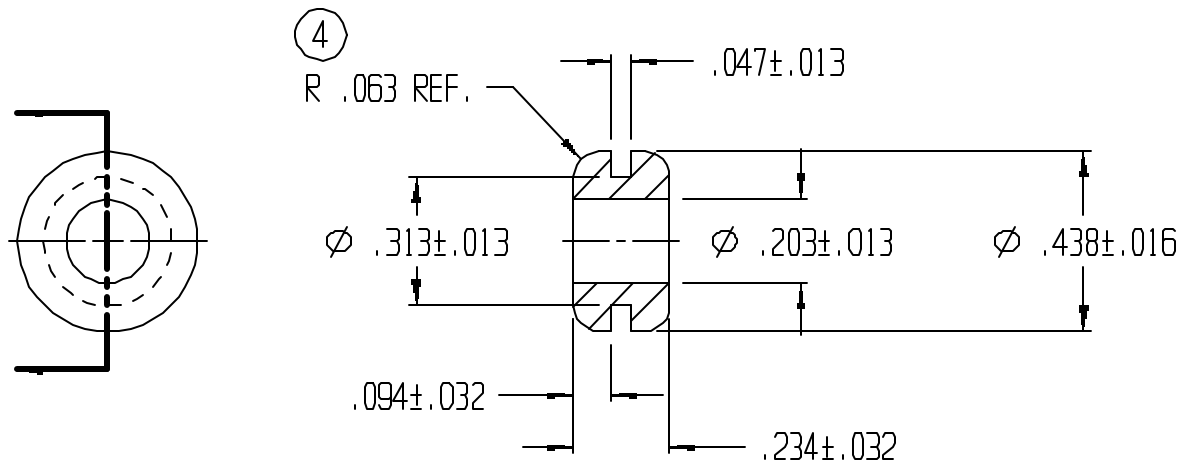


REVISIONS					
REV.	ZONE	BY	DESCRIPTION	DATE	APPROVED
3		MAD	REDRAWN TO CADKEY	10/31/97	
4		MAD	REF. WAS ±.013	12/1/98	



UNLESS OTHERWISE SPECIFIED
DIMENSIONS ARE IN INCHES

TOLERANCES ARE
DECIMALS MM ANGULAR



LAVELLE IND., INC.
665 McHENRY St. BURLINGTON, WISC. 53105
Ph. 414/763-2434 Fax 414/763-5607

TITLE
GROMMET

MATERIAL
F55004

SHEET 1 OF 1

DRAWN
M A DEAN

DATE
11/10/92

SIZE A SCALE 2X PART NO. 9033 REV. 4

CHECK

DATE

DESIGN DATE FILE g:\cadkey\parts\stock\grommets\9033.prt