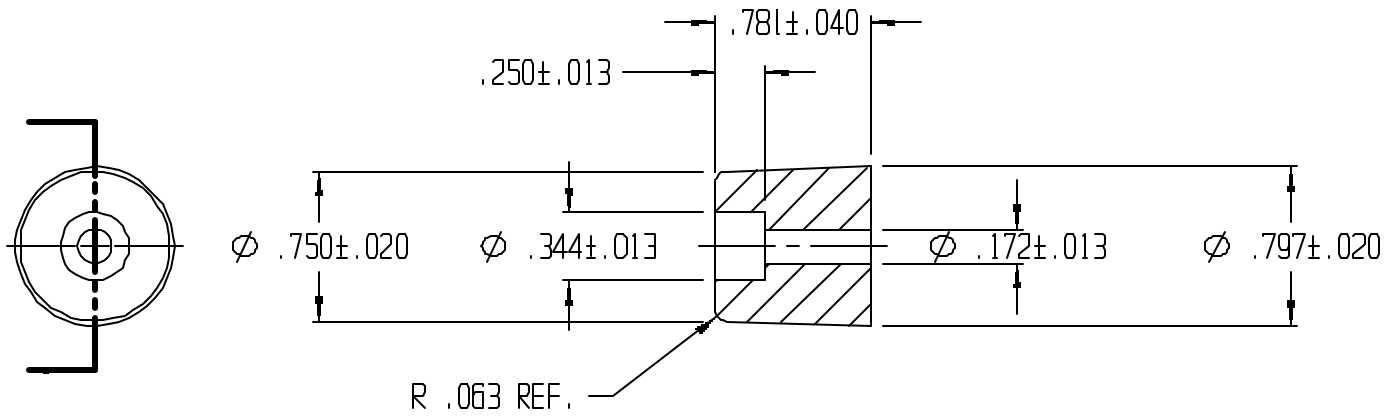


REVISIONS					
REV.	ZONE	BY	DESCRIPTION	DATE	APPROVED
2		MAD	REDRAWN TO CADKEY	1/20/98	



UNLESS OTHERWISE SPECIFIED
DIMENSIONS ARE IN INCHES

TOLERANCES ARE
DECIMALS MM ANGULAR



LAVELLE IND., INC.
665 McHENRY St. BURLINGTON, WISC. 53105
Ph. 414/763-2434 Fax 414/763-5607

TITLE RECESS BUMPER

MATERIAL F57006 SHEET 1 OF 1

DRAWN M A DEAN DATE 10/12/92

CHECK DATE

DESIGN DATE

SIZE A SCALE 1X PART NO. 516R REV. 2

FILE PATH g:\cadkey\parts\stock\recessbpr\516r.prt