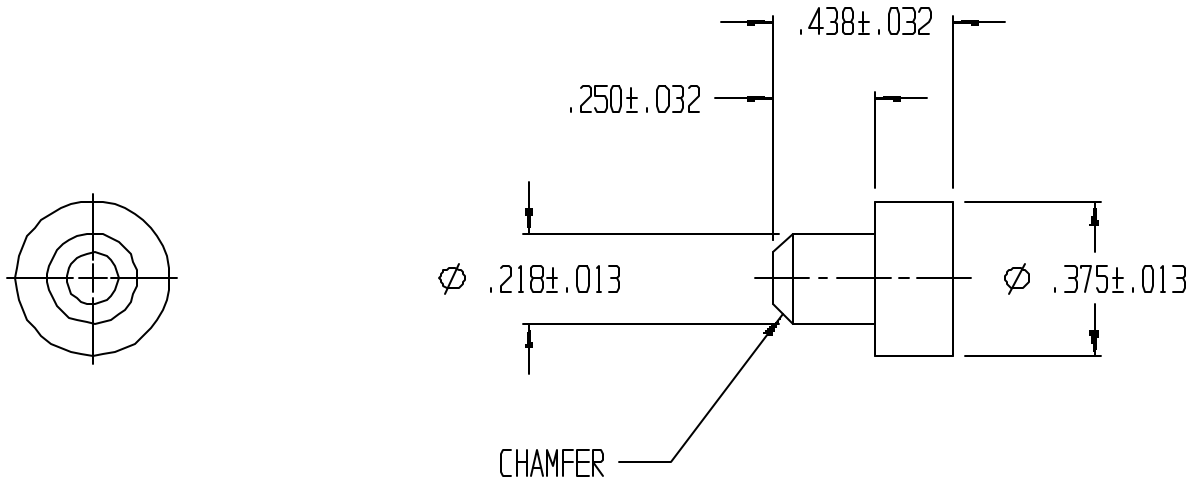


REVISIONS					
REV.	ZONE	BY	DESCRIPTION	DATE	APPROVED
3		MAD	REDRAWN TO CADKEY	8/25/97	
4		MAD	REVISED	11/19/98	



UNLESS OTHERWISE SPECIFIED DIMENSIONS ARE IN INCHES		LAVELLE		LAVELLE IND., INC.	
TOLERANCES ARE DECIMALS MM ANGULAR		665 McHENRY St.		BURLINGTON, WISC. 53105	
		Ph. 414/763-2434		Fax 414/763-5607	
		TITLE STEM BUMPER			
		MATERIAL F57006		SHEET 1	OF 1
DRAWN M A DEAN	DATE 10/16/92	SIZE A	SCALE 2X	PART NO. 301S	REV. 4
CHECK	DATE	FILE g:\codkey\parts\stock\bumpers\301s.prt			
DESIGN	DATE				