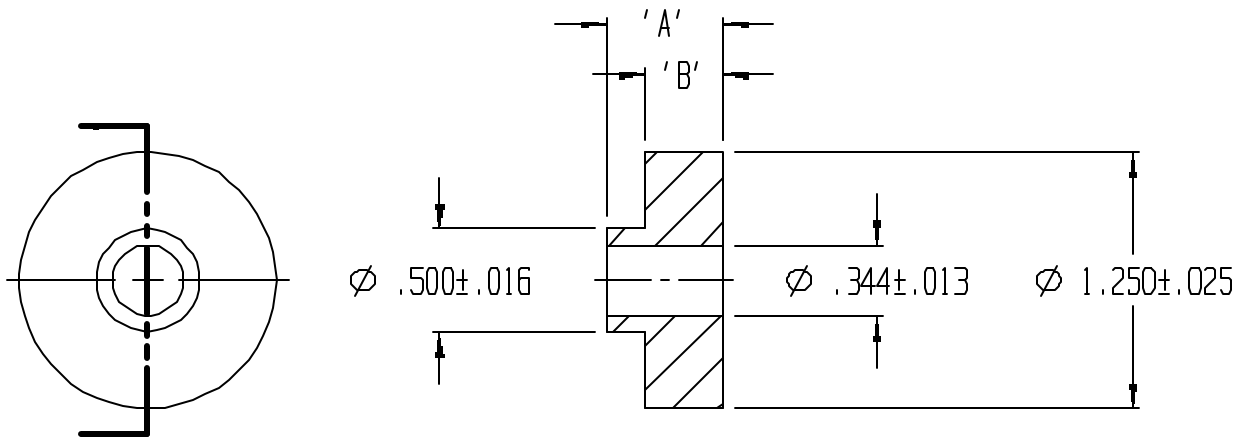


REVISIONS					
REV.	ZONE	BY	DESCRIPTION	DATE	APPROVED
3		MAD	REDRAWN TO CADKEY	10/8/97	



PART	'A'	±TOL	'B'	±TOL
1603	.375	.032	.187	.032
1607	.562	.036	.375	.032
1609	.687	.040	.500	.036

UNLESS OTHERWISE SPECIFIED DIMENSIONS ARE IN INCHES	
DECIMALS	ANGULAR
TOLERANCES ARE MM	
DRAWN	DATE
M A DEAN	12/17/92
CHECK	DATE
DESIGN	DATE



LAVELLE IND., INC.
665 McHENRY St. BURLINGTON, WISC. 53105
Ph. 414/763-2434 Fax 414/763-5607

TITLE		BUSHING	
MATERIAL		F55004	SHEET OF
			1 1
SIZE	SCALE	PART NO.	REV.
A	1X	LIST	3
FILE			
g:\cadkey\parts\stock\bushings\1603-9.prt			