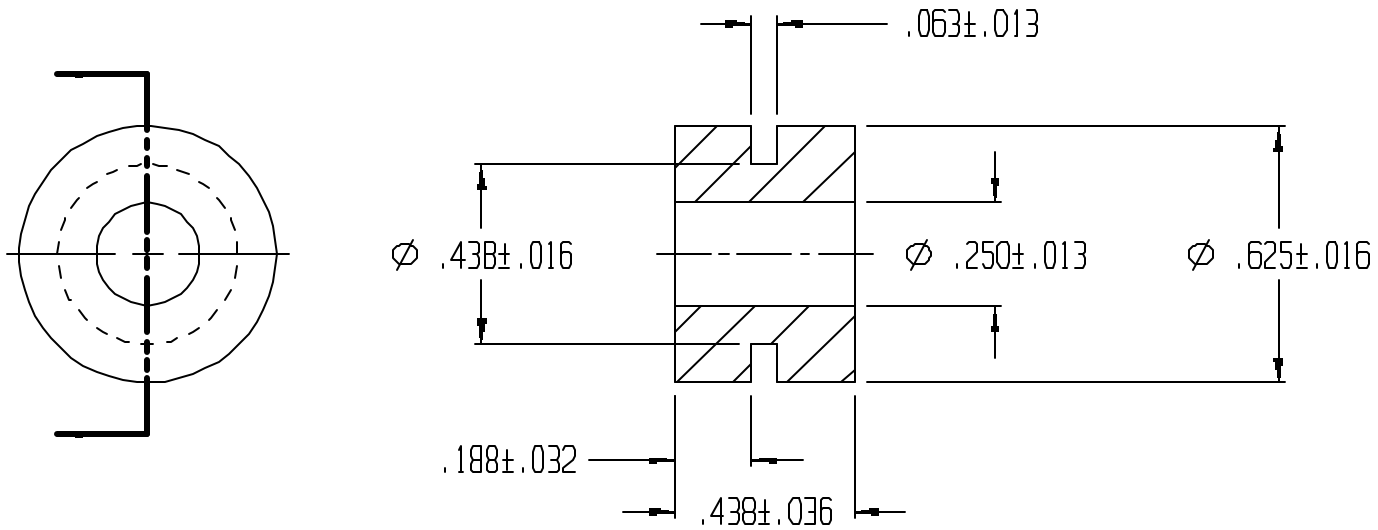


| REVISIONS | | | | | |
|-----------|------|-----|-------------------|----------|----------|
| REV. | ZONE | BY | DESCRIPTION | DATE | APPROVED |
| 3 | | MAD | REDRAWN TO CADKEY | 11/10/97 | |



| | | | | | |
|--|--|---|--|-------------------------|-------|
| UNLESS OTHERWISE SPECIFIED DIMENSIONS ARE IN INCHES | | LAVELLE | | LAVELLE IND., INC. | |
| TOLERANCES ARE DECIMALS MM ANGULAR | | 665 McHENRY St. | | BURLINGTON, WISC. 53105 | |
| | | Ph. 414/763-2434 | | Fax 414/763-5607 | |
| TITLE | | GROMMET | | | |
| MATERIAL | | F55004 | | SHEET | OF |
| DRAWN | | DATE | | 1 | 1 |
| M A DEAN | | 11/16/95 | | | |
| CHECK | | DATE | | SIZE | SCALE |
| | | | | A | 2X |
| DESIGN | | DATE | | PART NO. | REV. |
| | | | | 1111 | 3 |
| | | FILE | | | |
| | | g:\cadkey\parts\stock\grommets\1111.prt | | | |