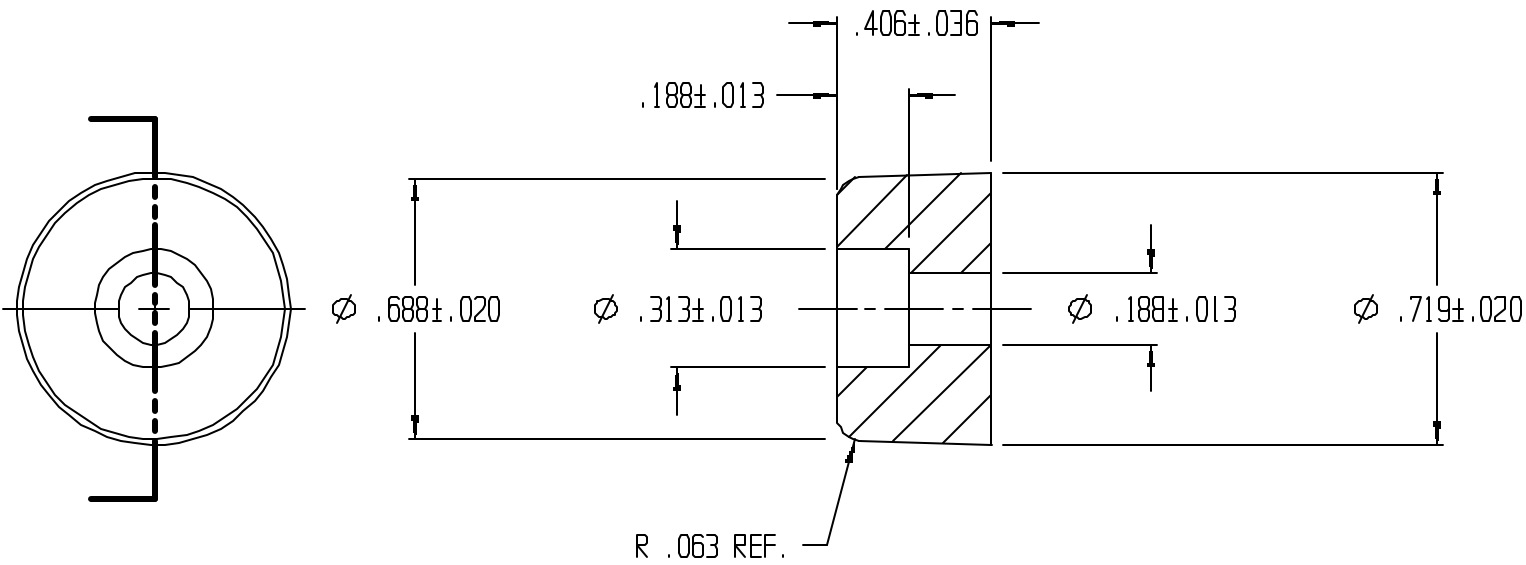


REVISIONS					
REV.	ZONE	BY	DESCRIPTION	DATE	APPROVED
3		MAD	REDRAWN TO CADKEY	2/5/98	



UNLESS OTHERWISE SPECIFIED
DIMENSIONS ARE IN INCHES

TOLERANCES ARE
DECIMALS MM ANGULAR

LAVELLE LAVELLE IND., INC.
665 MCHENRY ST. BURLINGTON, WISC. 53105
Ph. 414/763-2434 Fax 414/763-5607

TITLE: RECESS BUMPER

MATERIAL: F57006 SHEET 1 OF 1

DRAWN M A DEAN	DATE 10/9/92	SIZE A	SCALE X	PART NO. 741R	REV. 3
CHECK	DATE	DESIGN	DATE	FILE PATH g:\codkey\parts\stock\recssbpr\741r.prt	