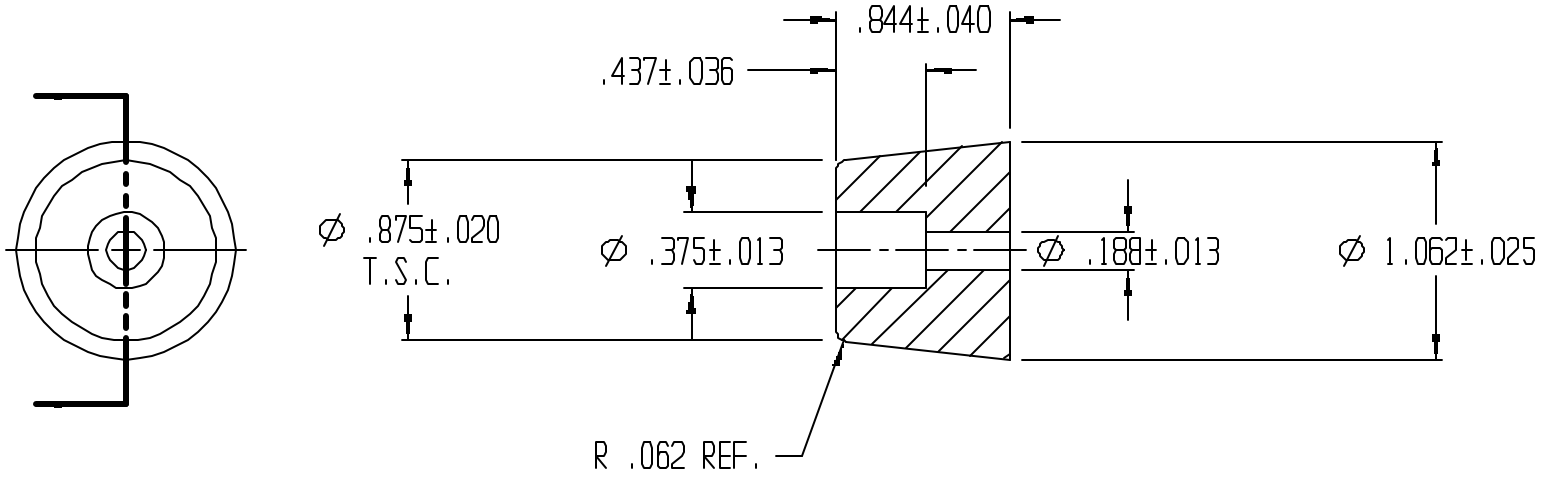


REVISIONS					
REV.	ZONE	BY	DESCRIPTION	DATE	APPROVED
3		MAD	REDRAWN TO CADKEY	6/17/99	



UNLESS OTHERWISE SPECIFIED DIMENSIONS ARE IN INCHES		LAVELLE		LAVELLE IND., INC.	
TOLERANCES ARE		665 McHENRY St.		BURLINGTON, WISC. 53105	
DECIMALS      MM      ANGULAR		Ph. 414/763-2434		Fax 414/763-5607	
TITLE		RECESS BUMPER			
DRAWN		MATERIAL		SHEET	
M A DEAN		F57006		1	
DATE		SCALE		OF	
10/13/92		1X		1	
CHECK		PART NO.		REV.	
		783R		3	
DESIGN		FILE			
		g:\cadkey\parts\stock\recsbnmp\783R.prt			