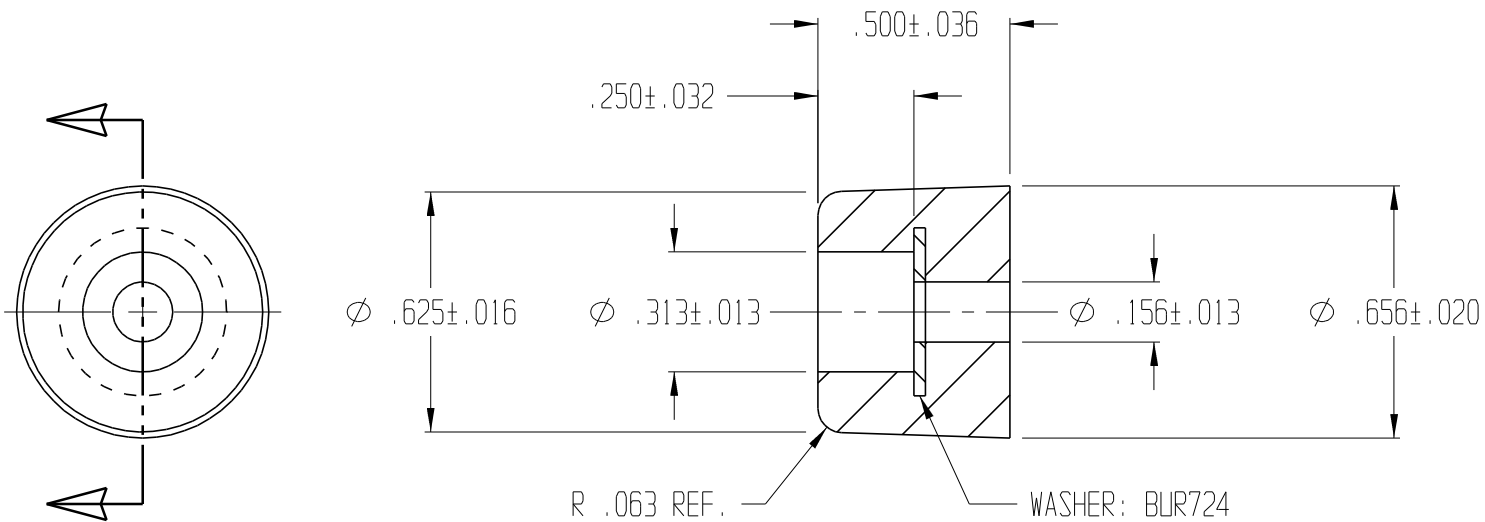



REVISIONS					
ECN	REV.	BY	DESCRIPTION	DATE	APPROVED
	4	MAD	REDRAWN TO CADKEY	3/3/98	
	5	MAD	.250 WAS .313	12/10/98	



UNLESS OTHERWISE SPECIFIED DIMENSIONS ARE IN INCHES		TOLERANCES ARE DECIMALS MM ANGULAR		 LAVELLE IND., INC. 665 McHENRY St. BURLINGTON, WISC. 53105 Ph. 414/763-2434 Fax 414/763-5607	
DRAWN M A DEAN		DATE 10/9/92		TITLE RECESS BUMPER	
CHECK		DATE		MATERIAL F57006	
DESIGN		DATE		SHEET OF 1 1	
				PART NO. 513RW	
				REV. 5	
				FILE PATH W:\CAD FILES\PARTS\ STOCK\RECSBPR\513RW\513RW.prt	