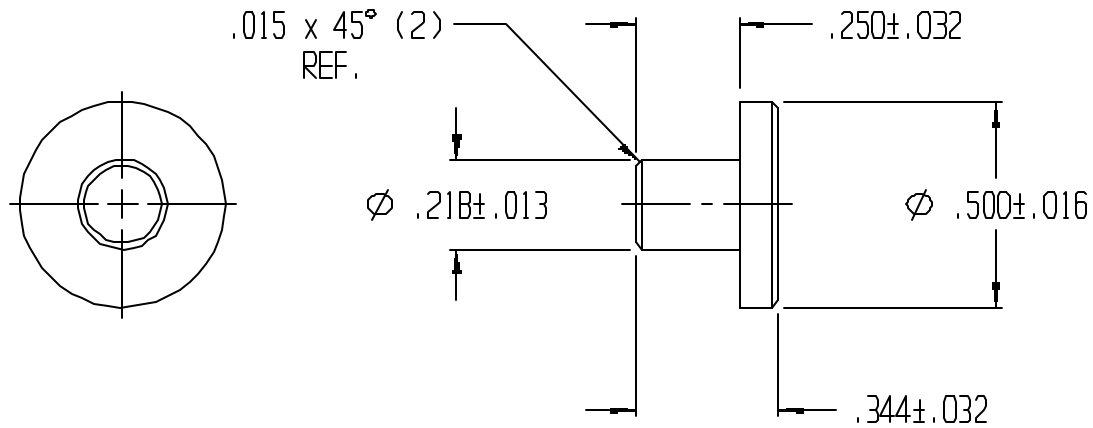


REVISIONS					
REV.	ZONE	BY	DESCRIPTION	DATE	APPROVED
3		MAD	REDRAWN TO CADKEY	8/22/97	
4		MAD	ADDED REF. TO .015 x 45° DIM.	4/8/98	



UNLESS OTHERWISE SPECIFIED DIMENSIONS ARE IN INCHES		LAVELLE		LAVELLE IND., INC.	
TOLERANCES ARE DECIMALS      MM      ANGULAR		665 McHENRY St.		BURLINGTON, WISC. 53105	
		Ph. 414/763-2434		Fax 414/763-5607	
TITLE		STEM BUMPER			
MATERIAL		F57006		SHEET	OF
DRAWN		DATE		1	1
M A DEAN		10/16/92			
CHECK		DATE		SIZE	SCALE
				A	1X
DESIGN		DATE		PART NO.	
				299S	
		FILE		REV.	
		g:\codkey\parts\stock\bumpers\299s.prt		4	