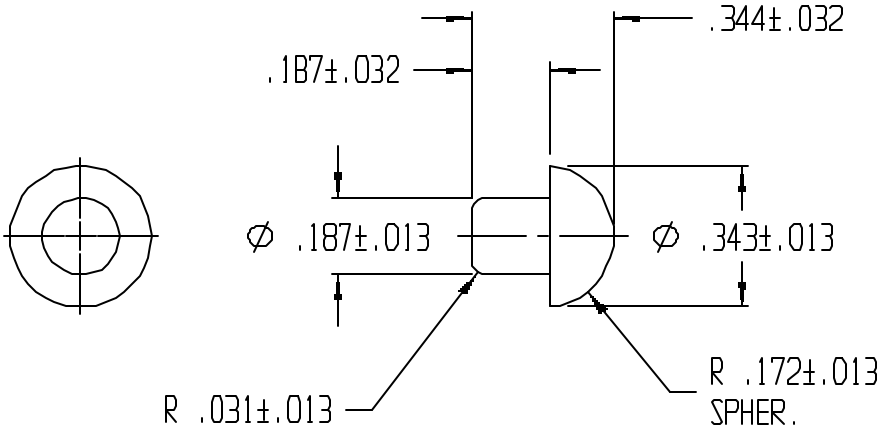


REVISIONS					
REV.	ZONE	BY	DESCRIPTION	DATE	APPROVED
2		MAD	REDRAWN TO CADKEY	8/22/97	



UNLESS OTHERWISE SPECIFIED DIMENSIONS ARE IN INCHES		LAVELLE		LAVELLE IND., INC.	
TOLERANCES ARE		665 McHENRY St.		BURLINGTON, WISC. 53105	
DECIMALS	MM	ANGULAR	Ph. 262/763-2434		Fax 262/763-5607
TITLE		MUSHROOM BUMPER			
MATERIAL		F57006		SHEET	OF
DRAWN		DATE		1	1
M A DEAN		10/16/92			
CHECK		DATE		SIZE	SCALE
				A	2X
DESIGN		DATE		PART NO.	REV.
				209M	2
		FILE g:\codkey\parts\stock\bumpers\209m.prt			