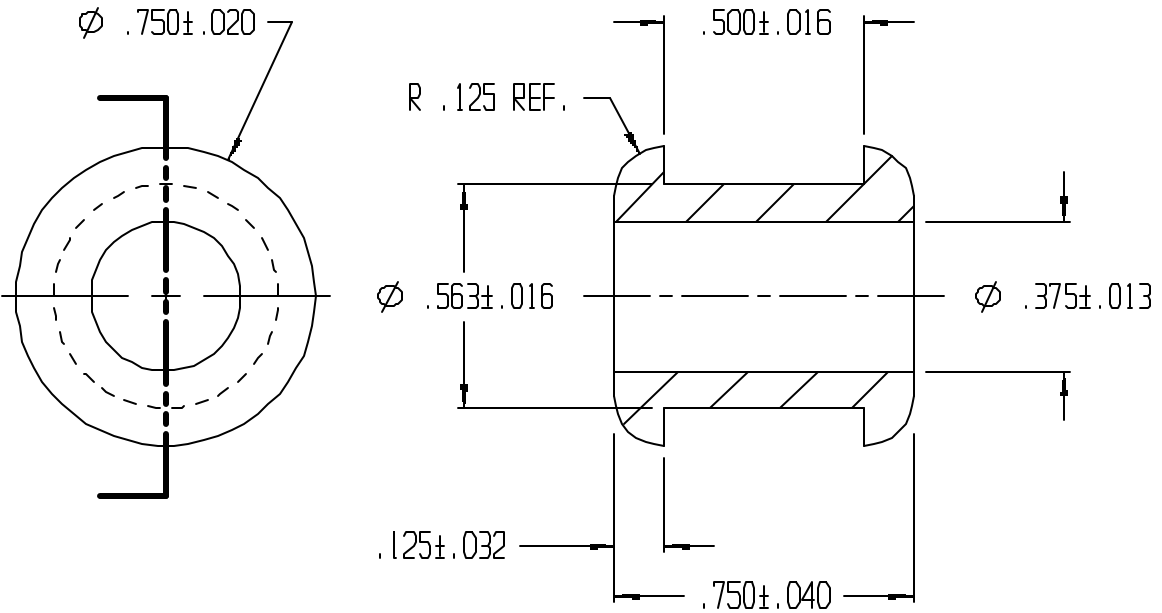



REVISIONS					
REV.	ZONE	BY	DESCRIPTION	DATE	APPROVED
2		MAD	REDRAWN TO CADKEY	1/30/98	



UNLESS OTHERWISE SPECIFIED DIMENSIONS ARE IN INCHES		 <b>LAVELLE IND., INC.</b> 665 McHENRY St. BURLINGTON, WISC. 53105 Ph. 414/763-2434 Fax 414/763-5607	
TOLERANCES ARE DECIMALS      MM      ANGULAR			
DRAWN M A DEAN		TITLE GROMMET	
DATE 1/17/97		MATERIAL F55004	
CHECK		SHEET 1 OF 1	
DATE		PART NO. 929	
DESIGN		REV. 2	
DATE		FILE PATH g:\cadkey\parts\stock\grommet\929.prt	