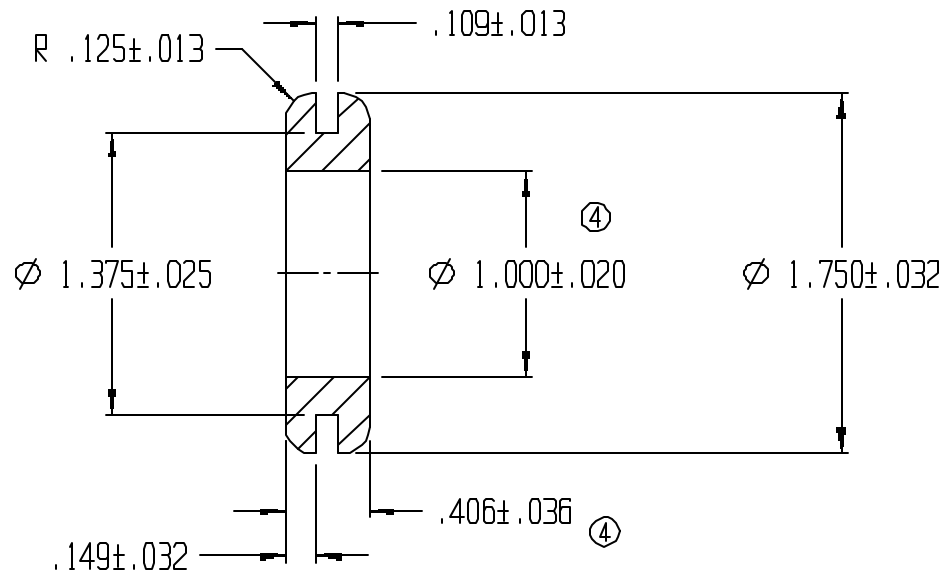
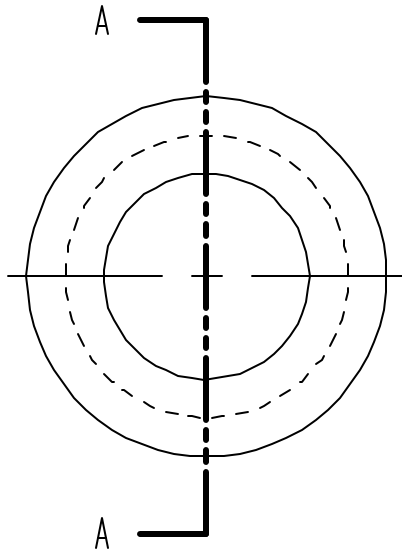


REVISIONS					
REV.	ZONE	BY	DESCRIPTION	DATE	APPROVED
3		MAD	REDRAWN TO CADKEY	8/11/97	
4		MAD	REVISED TOLERANCES	11/3/97	



SECTION A-A

UNLESS OTHERWISE SPECIFIED DIMENSIONS ARE IN INCHES		LAVELLE		LAVELLE IND., INC.	
TOLERANCES ARE DECIMALS      MM      ANGULAR				665 McHENRY St.    BURLINGTON, WISC. 53105 Ph. 414/763-2434    Fax 414/763-5607	
DRAWN M A DEAN		DATE 12/14/92		TITLE GROMMET	
CHECK		DATE		MATERIAL F55004	
DESIGN		DATE		PART NO. 1045	
		FILE g:\cadkey\parts\stack\grommets\1045.prt		SHEET    OF 1        1	
		SIZE A		SCALE 1X	
		REV. 4			